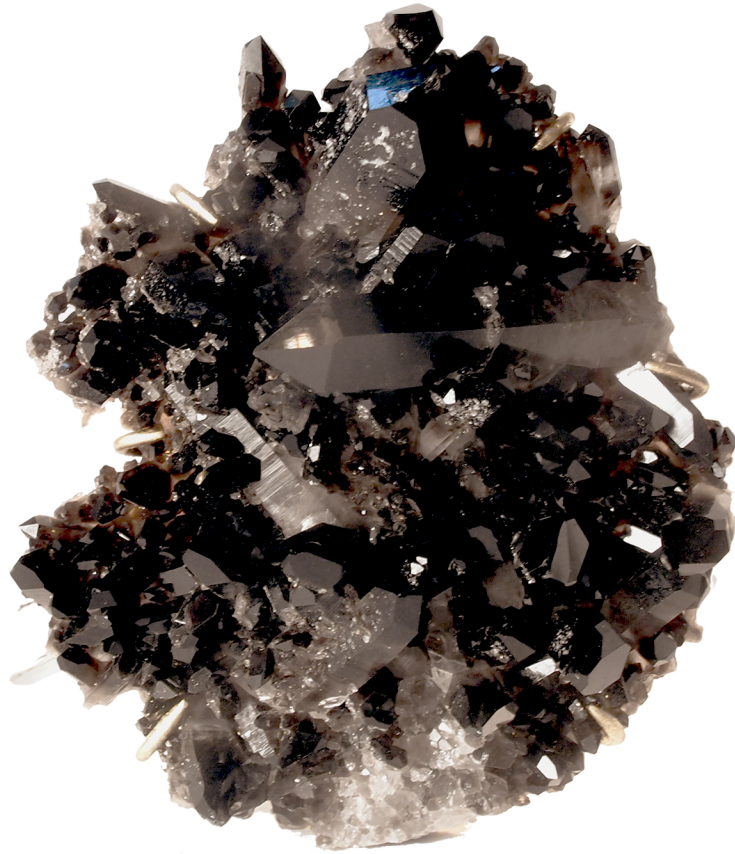


MARJORIE SKOURAS DESIGN

Jewelry for the Home



Smoky Quartz La Tache Wall Sconce

Description: Hand wrought iron frame holding a single quartz cluster

Dimensions: Each cluster is unique, approximate diameter is 8 inches with an overall depth of 5 inches

Voltage/Lamp: 120V/ 1 porcelain socket 60 watt candelabra bulb maximum

Available in: Silver leaf or gold leaf - Custom Finishes Available

